



Project: _____
Location: _____
Item #: _____ Quantity: _____
Model #: _____

MODEL: IRR-AGB96RIBT

REACH-IN:
Top Mounted Reach-in Freezers – Roll-In.



General Strengths

- ✓ **Doors.** Self-closing door system with permanent pressure. Stay open feature included when door remains open after 95 degrees. All doors include triple chamber door gaskets, easy to remove and snap in. Doors are field reversible.
- ✓ **Control systems.** Higher precision in managing temperature settings. Greater ability to adjust of temperature ranges as per the end user's requirement.
- ✓ **100% Tested.** All condenser units are tested 100%, in helium chambers to refrigerant leak detections.
- ✓ **Certified.** Audited and Certified by **INTERTEK** for compliance with UL 471 and NSF 7. AENOR audited and certified by internationally recognized firm. ISO 9001:2008 (Quality); ISO 14001:2004 (Environmental); OSHAS 18001:2007 (Prevention and Worker Safety)

MODEL	Dimensions (inches) (mm)			Nº Door	Nº Shelves	Ref.	Ref. Weight (Lbs.) (gr.)	Temp. Range (°F) (°C)	Capacity (Cu. Ft.) (L)	Cond. Unit. H.P.	Case Amps 115V.	Crated Weight (Lbs.) (Kg.)
	W	D	H									
IRR-AGB96RIBT	71-5/8 1820	41-3/4 1060	93 2360	2	-	R404A		-5°F/0°F -21°C/-18°C	96.3 2726	1-3/4	14.3	551 250

ETL LISTED TO UL471 STANDARD AND SANITATION CLASSIFIED TO NSF7 – WE RESERVE THE RIGHT TO CHANGE SPECIFICATIONS WITHOUT PRIOR NOTICE



Infrico USA Corp.
7042 N.W. 46th
Street
Miami, FL 33166
1.305.777.9599
Office
1.305.777.9598 Fax

www.infrico.us
service@infrico.com
sales@infrico.com

APPROVALS: AVAILABLE AT:

Follow us:

Revision: 01 Date: 09/29/2015 AGB96RIBT_FT.62.1



Project: _____
Location: _____
Item #: _____ Quantity: _____
Model #: _____

MODEL: IRR-AGB96RIBT

**REACH-IN:
Top Mounted Reach-in Freezers – Roll-In.**

STANDARD FEATURES

➤ Exterior and Interior

- AISI 304 Stainless Steel.
- Built with removable panel for easy installation,
- Isolated lower side with 0,8" (20 mm) thick with ramp included,

➤ Doors

- Polyurethane insulated door,
- Self closing door with stay open feature,
- Heavy-duty hinges,
- Triple chamber snap in door seals for easy removal and cleaning,
- Field reversible door,
- Doors locks,
- Full-height door opening 27-5/8" x 72-7/8" (702x1851 mm).
- Heated door frame to avoid accumulation of ice,

➤ Electrical

- Cord and NEMA 5-20P plug,
- Electrical connection is 115V / 1ph / 60 Hz



➤ Refrigeration

- Digital temperature controller with automatic defrost system,
- Expansion valve and hot gas defrost system for low temp units,
- Compact refrigeration system monoblock, INFRIBLOCK ®,
- Evaporative pan,
- Evaporator coil coated with anti-corrosion material 100% Polyester,
- Forced air refrigeration system,
- Refrigerant gas R404A,



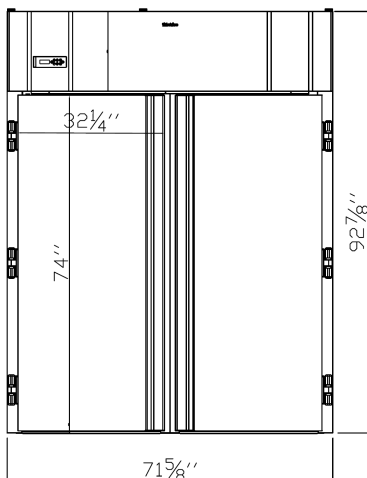
➤ Insulation

- CFC-Free polyurethane insulation, entire cabinet structure is foamed-in place using a high density polyurethane insulation 3-1/8" (80 mm) thick, ,
- Low GWP & Zero ODP effect.

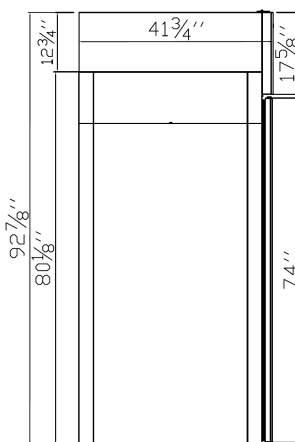
➤ **ETL Listed to UL471 Standard and Sanitation classified to NSF7.**

PLAN VIEW

ELEVATION



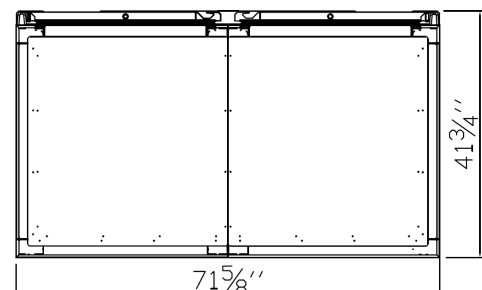
RIGHT VIEW



OPTIONAL FEATURES

- ✓ Electrical connection is 220-230 V / 1ph / 50 Hz (plug type varies).

PLAN VIEW



ETL LISTED TO UL471 STANDARD AND SANITATION CLASSIFIED TO NSF7 – WE RESERVE THE RIGHT TO CHANGE SPECIFICATIONS WITHOUT PRIOR NOTICE



Infrico USA Corp.
7042 N.W. 46th
Street
Miami, FL 33166
1.305.777.9599
Office
1.305.777.9598 Fax

www.infrico.us
service@infrico.com
sales@infrico.com

APPROVALS: AVAILABLE AT: