



Infrico Group®



Infrico
Main Office
Headquarters



Infrico **1,000,000**
square ft. plant.
Food service equipment



Infrico's Features and Benefits



Sanitation

- Rounded interior corners.
- Easy to remove shelves.
- Adjustable feet.
- 4" Diameter caster with locks.
- Internal drain plug for high water pressure cleaning.



Cabinet

- Insulation with free CFC's.
- Exteriors and Interiors built-in AISI 304 & 430 Stainless Steel.



Doors

- Hinges built with self-closing system and stay open door mechanism.
- Triple chamber door gasket easy to remove.
- Integrated door handles.
- Field reversible door feature available on single section uprights and all our horizontal equipment.



Control system

- Higher precision in the control of temperature.
- The temperature probes are NTC type.
- Automatic defrost cycle.
- Control of the final defrost temperature.



Refrigeration system

- Extractable condensing units.
- Anti-corrosion evaporators.
- Monoblocks [INFRIBLOCK ®] on our top mounted equipment, for easy service, cleaning and repair.
- Expansion valve [AGB-Line].
- Capillary system.
- 100% Polyester coated evaporators.



100% Tested

- Helium gas chambers called "GALILEO TP", to prevent refrigerant leaks.
- Nitrogen - Helium - Refrigerant tests on each circuit.
- Audited and certified by INTERTEK to fulfill the UL 471 and NSF-7 standards; applicable in the U.S. and Canadian markets.



AUTODESK
REVIT



DOE F-GAS

REACH-INS & BLAST CHILLERS

IRR-ABT20 1CBI

Blast chillers & shock freezer
Single or Double Combi Cart
Self Contained



47-1/4x43x97 "
-40°F

Self Contained
Single Speed Cart

Drain
(Need siphon)

54-1/2x31-1/4x84 "
33°F/38°F
49,0 ft
2 doors



IRR-AGB49CR

Top mounted reach-in glass door refrigerators

33x34-1/8x38-1/4 "
-40°F
42/26 Lbs
1 door



IBC-ABT5 1L

Blast chillers & shock freezer

33x34-1/8x68-1/2 "
-40°F
88/55 Lbs
1 door



IBC-ABT10 1L

Blast chillers & shock freezer



UNDERCOUNTERS/GRANITE PREP TABLES/CHEF BASES

-40°F
33°F/38°F
8,0 ft
2 drawers



IUC-UC272D

Undercounter refrigerators

67-3/8x32-5/8x33-1/8 "
0°F
17,0 ft
2 doors



MR 67BT

Deep undercounter refrigerators

67-3/8x32-5/8x64-1/16 "
35°F/41°F
17,0 ft
2 doors



IUC-MR67GTCOMBO

Granite top pizza prep tables

53-1/4x32-1/2x26-1/4 "
33°F/38°F
9,9 ft
2 doors



IUC-MSG52-60

Chef base



**HOLDS UP TO
700 LBS**
[MSG 36, 48, 52]

**HOLDS UP TO
1000 LBS**
[MSG 72, 96, 110]

AISI 304 Stainless steel worktop
with drip guard marine edge.

Heavy-duty stainless steel
drawer slides designed to hold
up to 440 Lbs.





WINE COOLERS & CABINETS/BACK BARS

51-3/4x23-1/2x75-1/2 "
39°F/64°F
12+12 ft
2 doors
100+100 bottles
Available in 2-Door and
a variety of colors
Cherry color standard



26x24-1/2x73-5/8 "
39°F/64°F
11,3 ft²
1-Door
90 bottles
Available in 2-Door and
a variety of colors
Cherry color standard



VINTAGE SERIES

IMD-EVV 23RG
Retro refrigerator

60-3/4x23-3/4x34-1/2 "
33°F/38°F
12,78 ft²

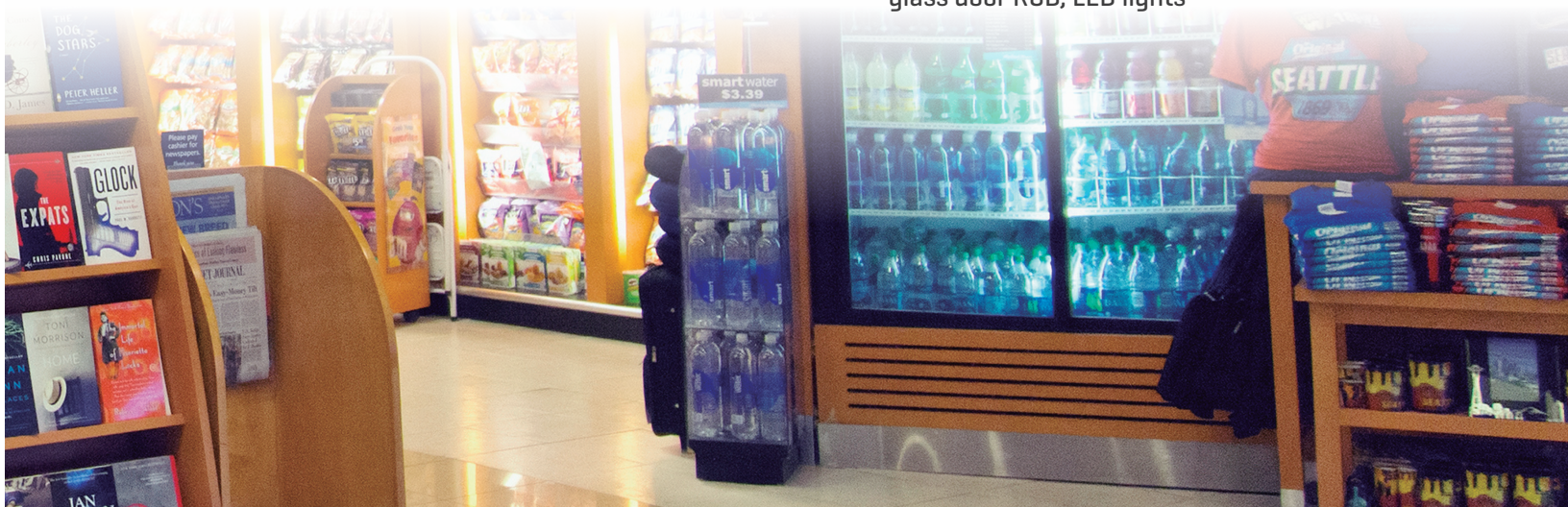


IMD-ERV60IIGD
Back bar cooler glass door RGB, LED Lights

23-5/8x20-1/8x35-3/4 "
39°F/54°F
5 ft²
1 door



IMD-ERV 35 II
Narrow back bar cooler stainless steel
glass door RGB, LED lights



 Infrico

DISPLAY CASES / GRAB AND GO

77x34-5/6x78-3/4 "
39°F/45°F
40 ft



IDC-ML18CM1

Open Air Merchandiser or Glass Option

50-1/2x31-7/8x51-1/8 "
39°F/45°F
13,0 ft
2 doors



IDC-VBR12FG

Pastry display cases straight glass
Refrigerated, Neutral and Self Service

63-7/8x35x57-1/4 "
39°F/45°F
11,79 ft



IDC-VC015

Combo Series Display Cases Straight Glass
Bottom Refrigerated and Dry Top Case

76-5/8x43-7/8x52 "
-2°F/5°F
4,95 ft - 20 pans




IDC-VAR18HFG

Gelato display cases flat glass



Infrico

LIMITED WARRANTY

 **Infrico** USA [further on stated as "Infrico"] warrants to the original purchaser of every new Infrico refrigerated unit, the cabinet and all parts thereof, to be free from defects in material or workmanship, under normal and proper use and maintenance service as specific by Infrico and upon proper installation and start-up in accordance with the instruction packet supplied with each Infrico unit. Infrico's obligation under this warranty is limited to the following conditions upon each date of invoice:

Parts	Two (2) years
Labor	Two (2) years
Compressor	Six (6) years

All parts covered under this specific above stated warranty that are determined as failures by Infrico, are limited to the repair or replacement, including labor charges of defective parts or assemblies.

WARRANTY CLAIM PROCEDURE

All claims for labor or parts must be made directly through Infrico. All claims should include model number of the unit, the serial number of the cabinet, proof of purchase, date of installation, and all pertinent information supporting the existence of the alleged defect.

Based on the reported case, Infrico will program the service attention either by sending an authorized technician to the place indicated by the Customer in order to solve the situation or will send the necessary spare parts for its repair.

This contract does not apply outside the limits of the USA and CANADA. Nor does it apply to any part which has been subject to misuse, neglect, alteration, accident or to any damage caused by transportation, flood, fire, or the acts of god. This contract is not effective unless the INFRICO Warranty Claim Card, furnished to the distributor, is properly filled out and mailed to [HYPERLINK "mailto:service@infrico.com"](mailto:service@infrico.com) service@infrico.com within 24 HOURS from the date of delivery. The term "Original Purchaser" as used herein shall be deemed to refer to that person, firm, association, or company for whom the refrigeration unit refers to herein is originally installed.

WHAT IS NOT COVERED BY THIS WARRANTY

Infrico's sole obligation under this warranty is limited to either repair or replacement of parts, subject to the additional limitations below. This warranty neither assumes nor authorizes any person to assume obligations other than those expressly covered by this warranty. No consequential damages: Infrico is not responsible for economic loss; profit loss or special indirect or consequential damages, including without limitation, losses or damages arising from food or product spoilage claims whether or not on account of refrigeration failure.

Warranty is not transferable: This warranty is not assignable and applies only in favor of the original purchaser/user to whom delivered. Any such assignment or transfer shall void the warranties herein made and shall void all warranties, express or implied, including any warranty of merchantability or fitness for a particular purpose.

Improper use: Infrico assumes no liability for parts or labor coverage for component failure or other damages resulting from improper usage or installation or failure to clean and/or maintain product as set forth in the warranty packet provided with the unit.

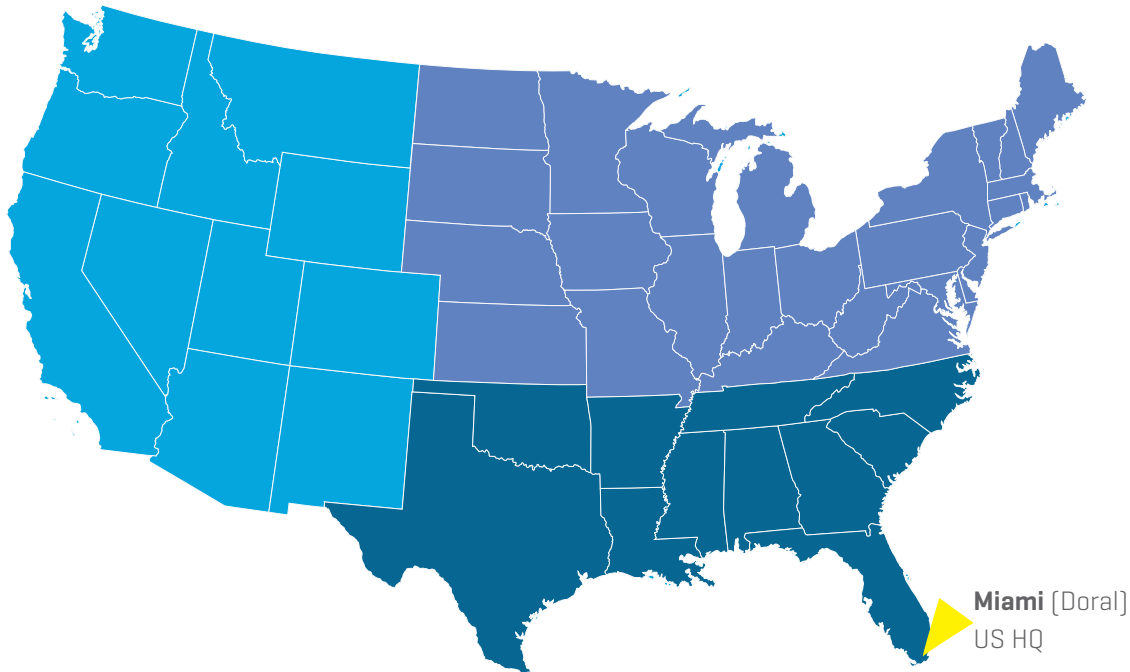
Alteration, neglect, abuse, misuse, accident, damage during transit or installation, fire, flood, acts of God: Infrico is not responsible for the repair or replacement of any parts that Infrico determines have been subjected after the date of manufacture to alteration, neglect, abuse, misuse, accident, damage during transit or installation, fire, flood, act of God or improper electrical connections. Infrico is not responsible for the repair or replacement of failed or damaged components resulting from electrical power failure, the use of extension cords, low voltage, or voltage drops to the unit. Infrico is not responsible for replacement resulting glass condensation upper humidity percentage catalogue indicated.

No implied warranty of merchantability or fitness for a particular purpose: There aren't any other warranties expressed, implied or statutory, except the warranties as described above. These warranties are exclusive and in lieu of all other warranties, including implied warranty and merchantability or fitness for a particular purpose. There are no warranties which extend beyond the description on the face hereof.

Outside USA & CANADA: This warranty does not apply to, and INFRICO is not responsible for, any warranty claims made on products sold or used outside the United States of America and Canada.



www.infrico.us



INFRICO

North America Corporate Division
1409 NW 84th Avenue, Doral FL 33126

Gigi Oyola

VP OF SALES & MARKETING

Illinois, Chicago Metro, Wisconsin, New York Metro, New Jersey, Pennsylvania, Delaware and Canada

✉ GigiOyola@infrico.com

☎ 305-777-9599 x700

📞 305-777-9598

Lily Hernandez

CUSTOMER SERVICE & OFFICE SUPPORT

✉ customerservice@infrico.com

☎ 305-777-9599 x 702

📞 305-777-9598

Julio Medina / Territory Manager

Maine, Vermont, New Hampshire, Massachusetts, Connecticut, Rhode Island, Upstate New York, Pennsylvania, Maryland, Virginia, Washington D.C., South Carolina, North Carolina, Georgia, Alabama, Tennessee, Florida, Oklahoma and Texas

✉ JMedina@infrico.com

☎ P: 305-777-9599 x703

📞 F: 305-777-9558

📞 C: 786-246-1458 Cell

Juan Pablo / Territory Manager

Washington, Hawaii, Alaska, Oregon, California, Nevada, Montana, Colorado, Utah, Arizona, New Mexico, Michigan, Indiana, Ohio and Kentucky

✉ JuanPablo@infrico.com

☎ P: 305-777-9599 x706

📞 F: 305-777-9558

📞 C: 786-369-6298 Cell

NATIONAL SERVICE DEPARTMENT

✉ service@infrico.com

📞 F: 305-777-9599 X 701

📞 C: 305-399-9472 Cell

PARTS & LOGISTICS DEPARTMENT / Luis Enrique

✉ sLogistics@infrico.com

📞 F: 305-777-9599 X 704

