



Prep tables Specifications

Sandwich salad prep tables & Megatop



Exterior

- AISI 430 stainless steel

- AISI 304 stainless steel top

Interior

- AISI 430 stainless steel

Insulation

- CFC-Free polyurethane insulation, entire cabinet structure is foamed-in place using a high density polyurethane insulation

- Low GWP & Zero ODP effect

Shelving

- [2] Two plastic coated wire shelves per section.



Doors

- Polyurethane insulated doors
- Self closing doors with stay open feature
- Stainless Steel heavy-duty hinges
- Triple chamber snap in door gaskets for easy removal and cleaning
- Field reversible doors

- Door opening WxH: 23-1/4"x21-7/8" [UC27P]; 19-5/8"x21-7/8" [UC48P/UC72P]; 25-5/8"x217/8" [UC60P]
- Door opening WxH: 23-1/4"x21-7/8" [UC27PMT]; 19-5/8"x21-7/8" [UC48PMT/UC72PMT]; 25-5/8"x21-7/8" [UC60PMT]



Refrigeration

- Temperature regulated by thermostatic control
- Energy-saving non-electric condensate pan
- Evaporator coil coated with anti-corrosion material 100% Polyester

- Forced air refrigeration system
- Front-breathing refrigeration system
- Refrigerant gas R290

Pizza prep tables



Exterior

- AISI 430 stainless steel

- AISI 304 stainless steel top

Interior

- AISI 430 stainless steel
- Internal drain plug for easy cleaning.

- Sealed interior floors and rounded cabinet corners

Insulation

- CFC-Free polyurethane insulation, entire cabinet structure is foamed-in place using a high density polyurethane insulation

- Low GWP & Zero ODP effect

Shelving

- [2] Two plastic coated wire shelves per section with stainless steel tray slides included

- Compatible with 12"x20" and 18"x26" pans



Doors

- Polyurethane insulated doors
- Self closing doors with stay open feature
- Stainless Steel heavy-duty hinges
- Triple chamber snap in door gaskets for easy removal and cleaning

- Field reversible doors
- Doors locks
- Door opening WxH: 21-5/8" x 20-5/8"



Refrigeration

- Digital temperature controller with automatic defrost system
- Energy-saving non-electric condensate pan
- Extractable condensing unit for easy service

- Evaporator coil coated with anti-corrosion material 100% Polyester
- Forced air refrigeration system
- Refrigerant gas R290

Granite top pizza prep tables



Exterior

- AISI 430 stainless steel

- AISI 304 stainless steel top

Interior

- AISI 430 stainless steel
- Internal drain plug for easy cleaning.

- Sealed interior floors and rounded cabinet corners

Insulation

- CFC-Free polyurethane insulation, entire cabinet structure is foamed-in place using a high density polyurethane insulation

- Low GWP & Zero ODP effect

Shelving

- [1] One plastic coated wire shelves per door with stainless steel tray slides included

- Compatible with 12"x20" pans



Doors

- Polyurethane insulated doors
- Self closing doors with stay open feature
- Stainless Steel heavy-duty hinges
- Triple chamber snap in door gaskets for easy removal and cleaning

- Field reversible doors
- Doors locks



Refrigeration

- Digital temperature controller with automatic defrost system
- Extractable condensing unit for easy service
- Evaporator coil coated with anti-corrosion material 100% Polyester
- Drain pan with condensate heater

- Front-breathing refrigeration system
- Refrigeration system independent for table and counter-top ingredient
- Refrigerant gas R290





Model MR93 EN

2 YEARS PARTS & LABOR	WARRANTY
6 YEARS COMPRESSOR	



Triple chamber snap in door gasket for easy cleaning



Self-closing doors with stay open feature



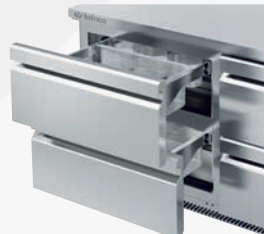
Rounded corners & sealed interior floor, NSF7, including drain plug for cleaning



Extractable side mounted condensing unit for easy service



Protected digital Controller, with automatic Defrost



Each guide supports 132 lb



Cutting board 9-1/2" depth



And also

[2] Plastic-coated shelves per section, with stainless steel uni-versal tray slides included. Optional: Stainless Steel shelves

AISI 430 Stainless Steel Interior & Exterior cabinet construction. AISI 304 Stainless Steel Top

Top includes 1/3 size polycarbonate food pans with pan dividers included

4" Diameter Casters with Locks on front set



Sandwich Salad prep tables - Megatop

UC PMT Series

CHARACTERISTICS



Structure

AISI 304 Series Stainless Steel worktop and sides panels **AISI 430** Stainless Steel.

Completely injected compact structure.
4 inch casters diameter. Breaks provided on front set.



Control

The control system has a greater precision in the control of the temperature. Easier to adjust the temperature range we want to achieve.



Certifications

Infrico is audited and certified by the international organization **INTERTEK** in accordance with **UL 471 and NSF 7**.



IRT-UC27PMT



IRT-UC60PMT

More details and technical sheet



MOD.



Overall Dimensions



Doors



(°F)



(ft³)



(HP)



115V



[Lbs]



[\$]

MOD.	27-3/4	34-1/8	49	1	35°F/41°F	8.0	1/4	3.9	310	\$5.250
IRT-UC27PMT	27-3/4	34-1/8	49	1	35°F/41°F	8.0	1/4	3.9	310	\$5.250
IRT-UC48PMT	48-1/8	34-1/8	49	2	35°F/41°F	14.0	1/4	4.1	410	\$7.200
IRT-UC60PMT	60-3/8	34-1/8	49	2	35°F/41°F	17.0	1/4	4.1	500	\$7.875
IRT-UC72PMT	72-5/8	34-1/8	49	3	35°F/41°F	21.0	1/3	4.6	530	\$9.050

Height already includes 5-1/8" for casters

4. ETL LISTED TO UL471 standard and sanitation classified to NSF / We reserve the right to change specifications without prior notice. Non contractual pictures



Sandwich Salad prep tables - Megatop

UC PMT Series

TECHNICAL CHARACTERISTICS

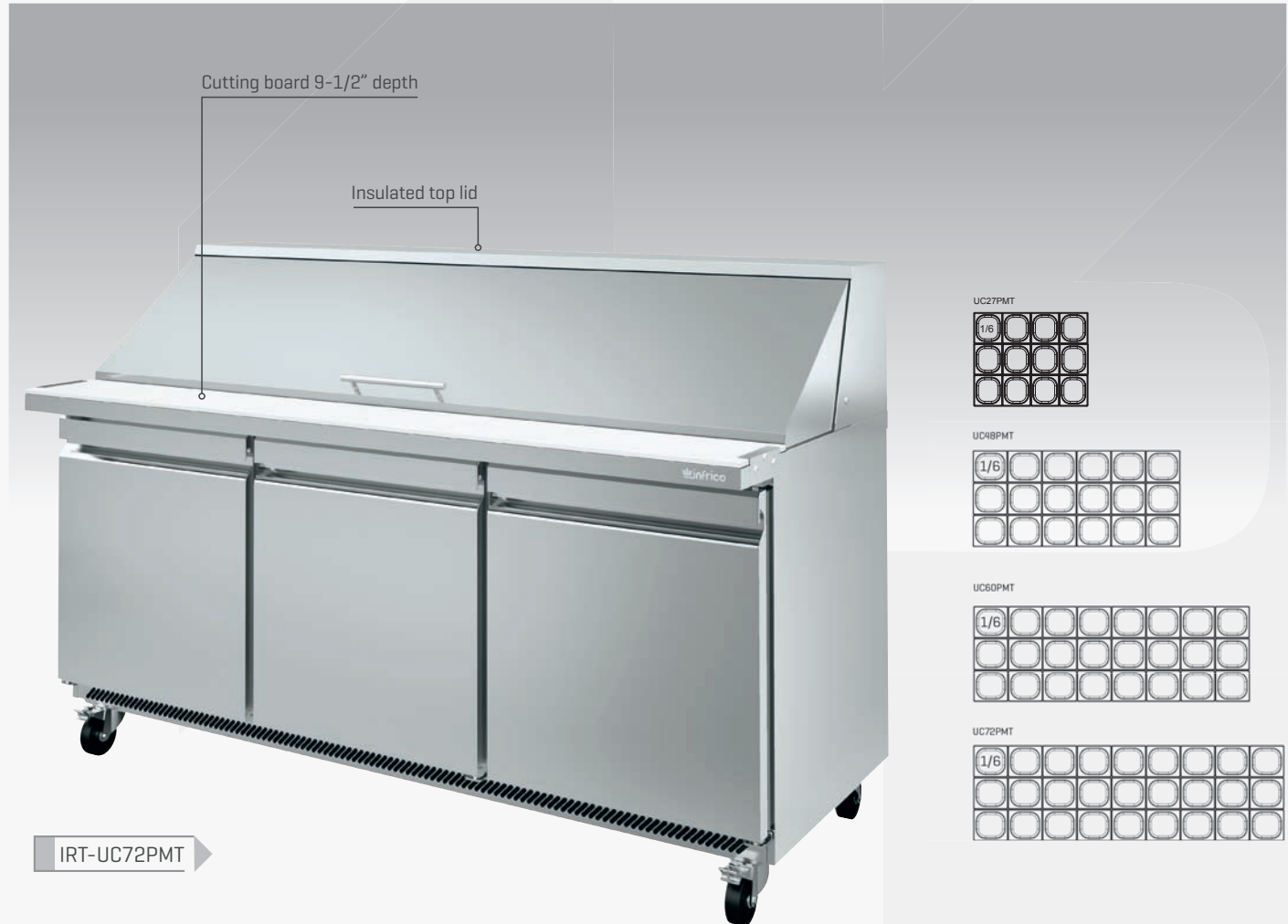


Refrigeration

Air cooled condensation system.
Forced air evaporation system.

Evaporative pan.

Evaporator coil coated with anti-corrosion material.
Front-breathing refrigeration system.



IRT-UC72PMT

PREP TABLES

STANDARD FEATURES

ELECTRICAL	Cord and NEMA 5-15P plug	Electrical connection is 115V / 1ph / 60Hz
DOE	R290, electronic fan motors	
SALAD TOP	Stainless steel insulated lid Top includes 1/6 size polycarbonate food pans {UC27PMT = 12 pans; UC48PMT = 18 pans; UC60PMT = 24 pans; UC72PMT = 27 pans}	Pan divider bars included for varying size pan configurations Removable sanitary polyethylene cutting board included Front breathing
OPTIONS	Drawer kit Flat lid Single overshelf	Double overshelf Set of 2" casters [locking on the front set]