



Prep tables Specifications

Sandwich salad prep tables & Megatop



Exterior

- AISI 430 stainless steel

- AISI 304 stainless steel top

Interior

- AISI 430 stainless steel

Insulation

- CFC-Free polyurethane insulation, entire cabinet structure is foamed-in place using a high density polyurethane insulation

- Low GWP & Zero ODP effect

Shelving

- [2] Two plastic coated wire shelves per section.



Doors

- Polyurethane insulated doors
- Self closing doors with stay open feature
- Stainless Steel heavy-duty hinges
- Triple chamber snap in door gaskets for easy removal and cleaning
- Field reversible doors

- Door opening WxH: 23-1/4"x21-7/8" [UC27P]; 19-5/8"x21-7/8" [UC48P/UC72P]; 25-5/8"x217/8" [UC60P]
- Door opening WxH: 23-1/4"x21-7/8" [UC27PMT]; 19-5/8"x21-7/8" [UC48PMT/UC72PMT]; 25-5/8"x21-7/8" [UC60PMT]



Refrigeration

- Temperature regulated by thermostatic control
- Energy-saving non-electric condensate pan
- Evaporator coil coated with anti-corrosion material 100% Polyester

- Forced air refrigeration system
- Front-breathing refrigeration system
- Refrigerant gas R290

Pizza prep tables



Exterior

- AISI 430 stainless steel

- AISI 304 stainless steel top

Interior

- AISI 430 stainless steel
- Internal drain plug for easy cleaning.

- Sealed interior floors and rounded cabinet corners

Insulation

- CFC-Free polyurethane insulation, entire cabinet structure is foamed-in place using a high density polyurethane insulation

- Low GWP & Zero ODP effect

Shelving

- [2] Two plastic coated wire shelves per section with stainless steel tray slides included

- Compatible with 12"x20" and 18"x26" pans



Doors

- Polyurethane insulated doors
- Self closing doors with stay open feature
- Stainless Steel heavy-duty hinges
- Triple chamber snap in door gaskets for easy removal and cleaning

- Field reversible doors
- Doors locks
- Door opening WxH: 21-5/8" x 20-5/8"



Refrigeration

- Digital temperature controller with automatic defrost system
- Energy-saving non-electric condensate pan
- Extractable condensing unit for easy service

- Evaporator coil coated with anti-corrosion material 100% Polyester
- Forced air refrigeration system
- Refrigerant gas R290

Granite top pizza prep tables



Exterior

- AISI 430 stainless steel

- AISI 304 stainless steel top

Interior

- AISI 430 stainless steel
- Internal drain plug for easy cleaning.

- Sealed interior floors and rounded cabinet corners

Insulation

- CFC-Free polyurethane insulation, entire cabinet structure is foamed-in place using a high density polyurethane insulation

- Low GWP & Zero ODP effect

Shelving

- [1] One plastic coated wire shelves per door with stainless steel tray slides included

- Compatible with 12"x20" pans



Doors

- Polyurethane insulated doors
- Self closing doors with stay open feature
- Stainless Steel heavy-duty hinges
- Triple chamber snap in door gaskets for easy removal and cleaning

- Field reversible doors
- Doors locks



Refrigeration

- Digital temperature controller with automatic defrost system
- Extractable condensing unit for easy service
- Evaporator coil coated with anti-corrosion material 100% Polyester
- Drain pan with condensate heater

- Front-breathing refrigeration system
- Refrigeration system independent for table and counter-top ingredient
- Refrigerant gas R290





Model MR93 EN

| | |
|---------------------------------|----------|
| 2 YEARS PARTS & LABOR | WARRANTY |
| 6 YEARS COMPRESSOR | |



Triple chamber snap in door gasket for easy cleaning



Self-closing doors with stay open feature



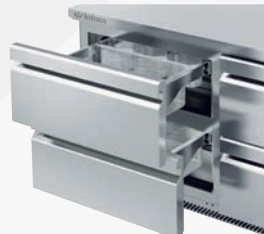
Rounded corners & sealed interior floor, NSF7, including drain plug for cleaning



Extractable side mounted condensing unit for easy service



Protected digital Controller, with automatic Defrost



Each guide supports 132 lb



Cutting board 9-1/2" depth



And also

[2] Plastic-coated shelves per section, with stainless steel uni-versal tray slides included. Optional: Stainless Steel shelves

AISI 430 Stainless Steel Interior & Exterior cabinet construction. AISI 304 Stainless Steel Top

Top includes 1/3 size polycarbonate food pans with pan dividers included

4" Diameter Casters with Locks on front set



Granite top pizza Prep tables

CHARACTERISTICS



Energy efficiency

Improvement of the energy classification, due to the use of **R-290** refrigerant, electronic fans and optimized circulation of the air for **improved temperature uniformity in the interior**.



New control system

The **new user-friendly controller IP65** has greater **precision in temperature control**. Easier to adjust the temperature range we want to achieve.



Certifications

Infrico is audited and certified by an international organization AENOR in **ISO 9001: 2015** (Quality); **ISO 14001: 2015** (Environment); **OSHAS 18001: 2007** (Worker Safety and Health) and by **INTERTEK** in accordance with **UL 471 and NSF 7**.



More details and technical sheet



IRT-MPG1490

MOD.



Overall Dimensions



Doors



(°F)



(ft³)



[HP]



115V



[Lbs]



[\$]

| MOD. | 58-5/8 | 27-1/2 | 32-3/4 55-3/8 | 2 | 33°F/38°F 39°F/41°F | 10.4 | 1/4 | 6.1 | 520 | \$11.500 |
|-------------|--------|--------|------------------|---|------------------------|------|-----|------|-----|----------|
| IRT-MPG1490 | 58-5/8 | 27-1/2 | 32-3/4 55-3/8 | 2 | 33°F/38°F 39°F/41°F | 10.4 | 1/4 | 6.1 | 520 | \$11.500 |
| IRT-MPG1980 | 78 | 27-1/2 | 32-3/4 55-3/8 | 3 | 33°F/38°F 39°F/41°F | 2.36 | 1/6 | 1.82 | 190 | \$17.500 |

Height already includes 5-1/8" for casters

ETL LISTED TO UL471 standard and sanitation classified to NSF / We reserve the right to change specifications without prior notice. Non contractual pictures



Granite top pizza Prep tables

MPG Series

CHARACTERISTICS



Structure

Compact **structure** totally **injected** by high pressure free CFC's Polyurethane. Zero ODP and Zero GWP. Granite worktop.



Refrigeration

Front-breathing ventilation system/ cold plate. **Evaporative tray** without electrical heaters. New **Monoblock** refrigeration system (MPG).



New doors design

New design of **doors with double grip handle**. **Doors equipped with hinges** for automatic return and permanent pressure during closing. The automatic return is free when the opening exceeds 95°. They include four-chamber "cleanless" flat door gasket easily removable.



IRT-MPG1980

STANDARD FEATURES

ELECTRICAL

Cord and NEMA 5-15P plug
Electrical connection is 115V / 1ph / 60Hz

OPTIONS

Stainless Steel wire shelves
Additional slide kits